



The Covert

Apartment 1

2 Bedroom, Ground Floor

99 sq m / 1070 sq ft

Living / Dining

6.30m x 6.60m 20'8" x 21'8"

Kitchen

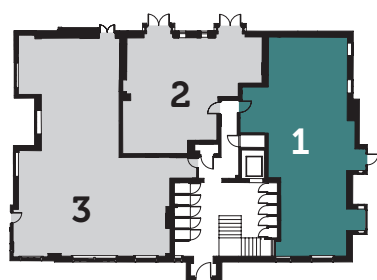
6.40m x 3.70m 21'0" x 12'2"

Master Bedroom

5.80m x 3.00m 19'0" x 9'10"

Bedroom 2

4.30m x 2.80m 14'1" x 9'2"

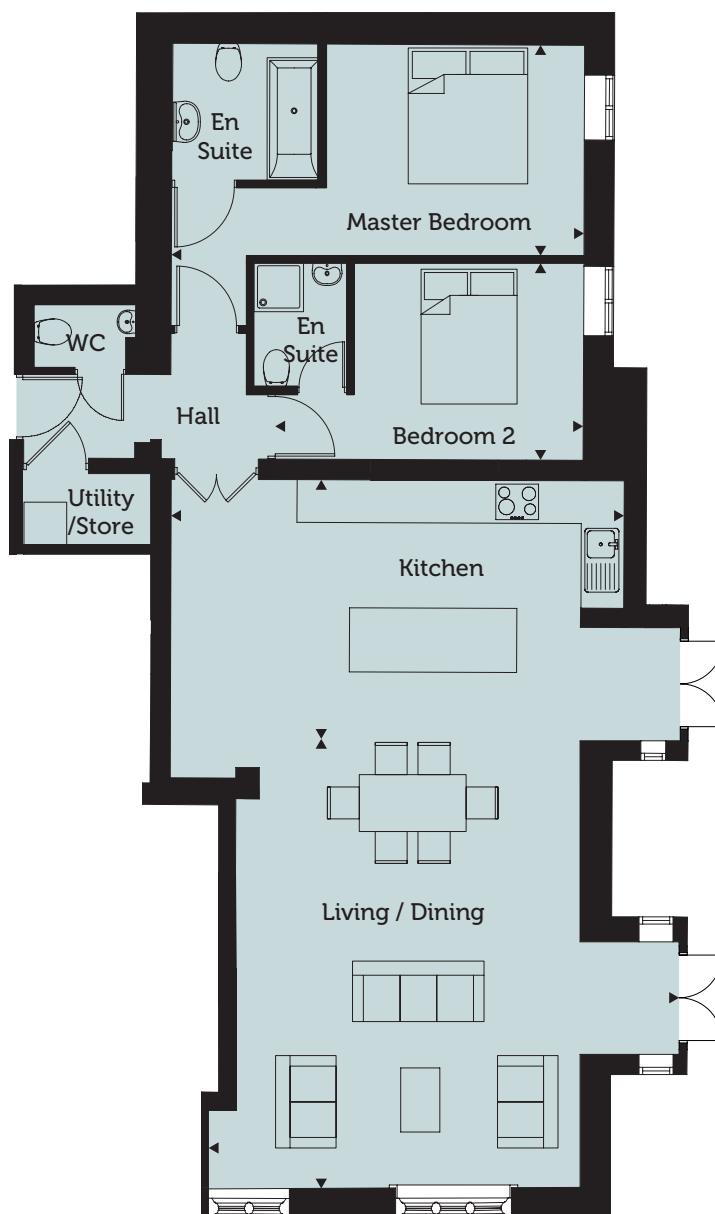


Ground Floor

For more information, or to
arrange a viewing, please contact

020 7129 1427

sales@martinhomes.co





The Morton

Apartment 2

2 Bedroom, Ground Floor

68 sq m / 728 sq ft

Living / Dining

4.60m x 3.70m 15'1" x 12'2"

Kitchen

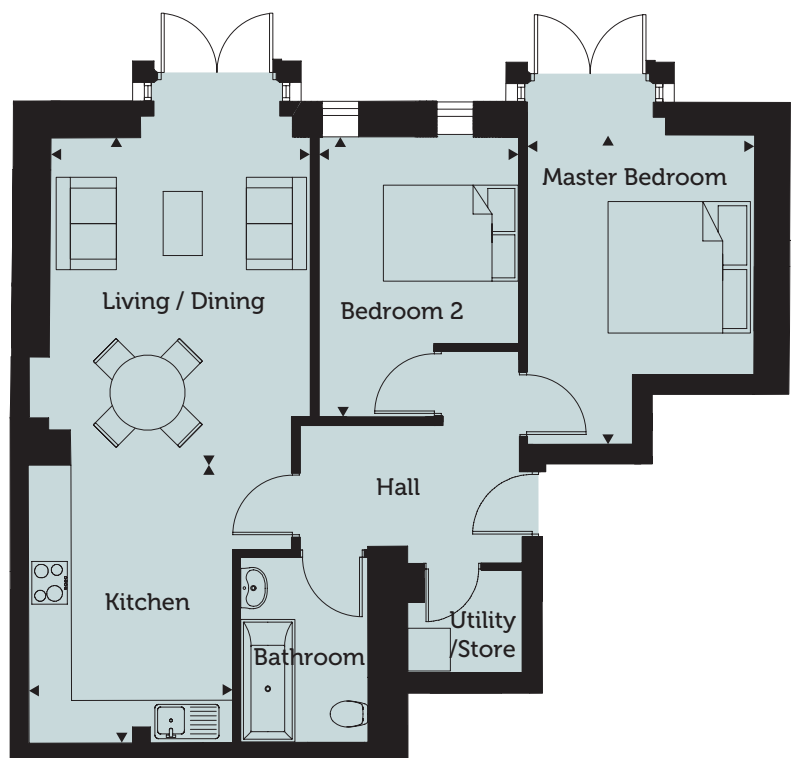
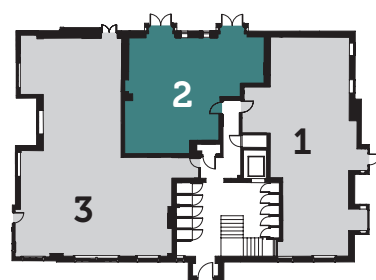
3.90m x 2.90m 12'10" x 9'6"

Master Bedroom

4.40m x 3.40m 14'5" x 11'2"

Bedroom 2

3.90m x 2.70m 12'10" x 8'10"



Ground Floor

For more information, or to
arrange a viewing, please contact

020 7129 1427

sales@martinhomes.co



The Sergison

Apartment 3

2 Bedroom, Ground Floor

141 sq m / 1522 sq ft

Living / Dining

8.00m x 5.50m 26'3" x 18'01"

Kitchen

3.50m x 3.50m 11'6" x 11'6"

Master Bedroom

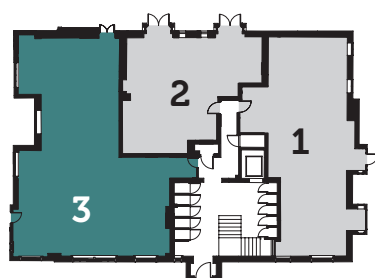
4.50m x 4.40m 14'9" x 14'5"

Bedroom 2

4.00m x 2.70m 13'2" x 8'10"

Study

3.90m x 2.60m 12'10" x 8'6"



Ground Floor

For more information, or to
arrange a viewing, please contact

020 7129 1427

sales@martinhomes.co





The Dencombe

Apartment 4

2 Bedroom, First Floor

141 sq m / 1518 sq ft

Living / Dining / Kitchen

10.4m x 6.90m 34'2" x 22'8"

Master Bedroom

4.80m x 4.80m 15'9" x 15'9"

Bedroom 2

6.00m x 3.60m 19'8" x 11'10"



First Floor

For more information, or to
arrange a viewing, please contact

020 7129 1427

sales@martinhomes.co



The Ashfold

Apartment 5

2 Bedroom, First Floor

96 sq m / 1034 sq ft

Living Room

5.00m x 4.80m 16'5" x 15'9"

Kitchen / Dining

4.00m x 4.00m 13'2" x 13'2"

Master Bedroom

5.90m x 4.10m 19'4" x 13'5"

Bedroom 2

3.90m x 2.80m 12'10" x 9'2"



First Floor

For more information, or to
arrange a viewing, please contact

020 7129 1427

sales@martinhomes.co



The Woodside

Apartment 6

2 Bedroom, First Floor

90 sq m / 969 sq ft

Living Room

5.50m x 4.60m 18'1" x 15'1"

Kitchen / Dining

5.10m x 3.10m 16'9" x 10'2"

Master Bedroom

5.00m x 2.80m 16'5" x 9'2"

Bedroom 2

3.60m x 3.50m 11'10" x 11'6"



First Floor

For more information, or to
arrange a viewing, please contact

020 7129 1427

sales@martinhomes.co





The Hyde

Apartment 7

3 Bedroom, Second & Third Floors

175 sq m / 1883 sq ft

Living / Dining

7.00m x 5.80m 23'0" x 19'0"

Kitchen

3.70m x 3.50m 12'2" x 11'6"

Master Bedroom

6.00m x 3.60m 19'8" x 11'10"

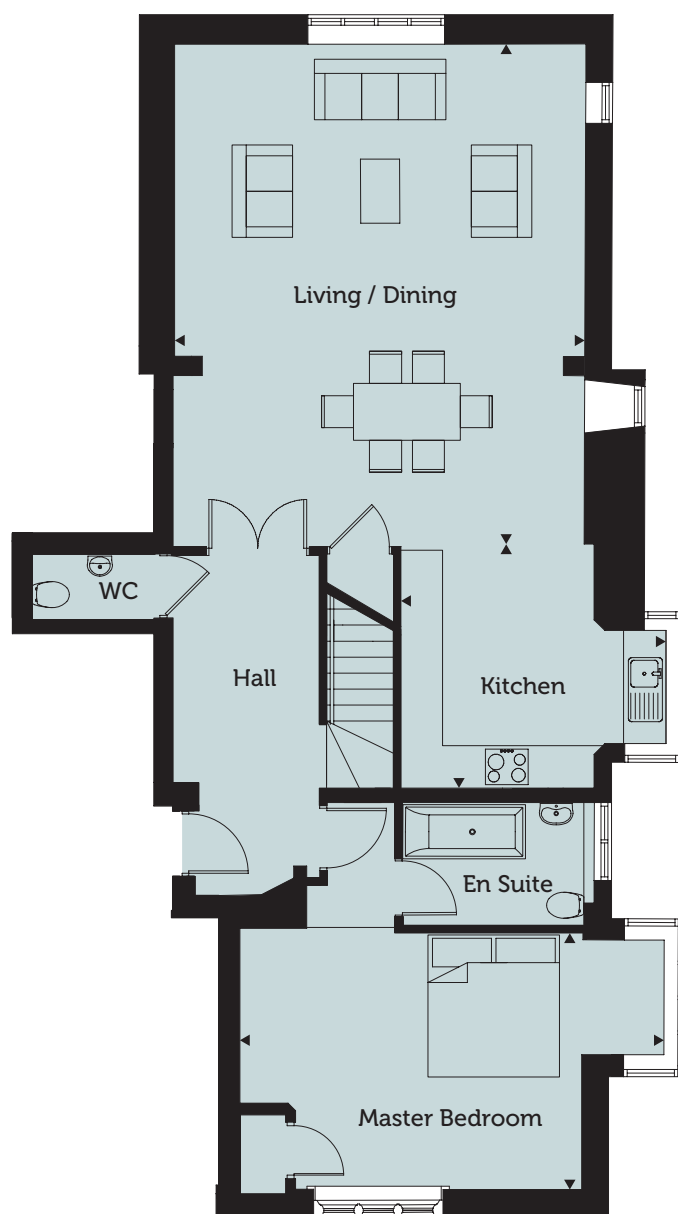


Second Floor

For more information, or to
arrange a viewing, please contact

020 7129 1427

sales@martinhomes.co





The Hyde

Apartment 7

3 Bedroom, Second & Third Floors

175 sq m / 1883 sq ft

Bedroom 2

5.60m x 3.50m 18'5" x 11'6"

Bedroom 3

6.00m x 3.20m 19'8" x 10'6"

Study

4.10m x 2.10m 13'5" x 6'11"

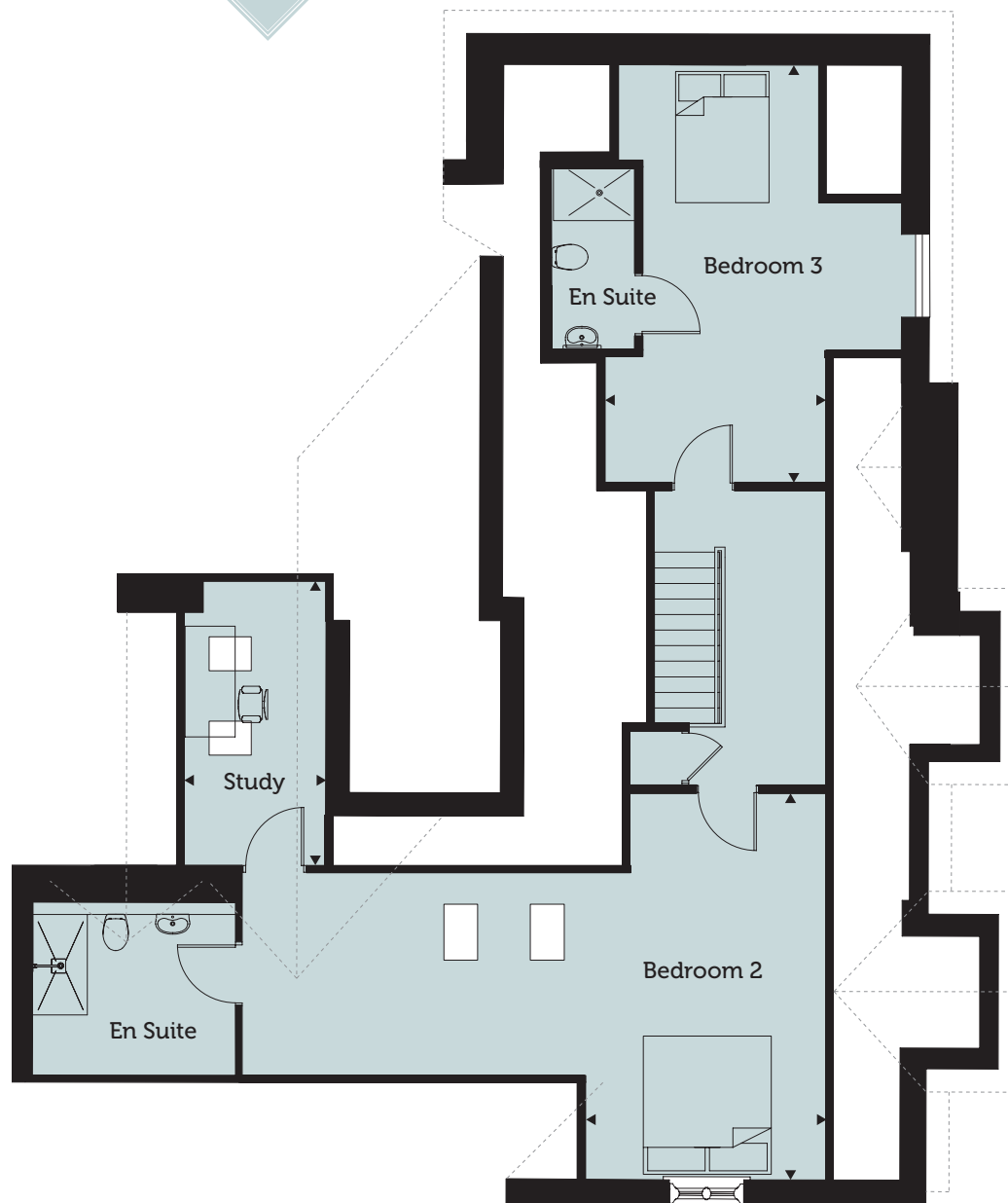


Third Floor

For more information, or to
arrange a viewing, please contact

020 7129 1427

sales@martinhomes.co





The Colwood

Apartment 8

3 Bedroom, Second & Third Floors

166.5 sq m / 1792 sq ft

Living / Dining

10.6m x 4.70m 34'9" x 15'5"

Kitchen

3.50m x 2.90m 11'6" x 9'6"

Master Bedroom

5.40m x 4.10m 17'9" x 13'5"

Bedroom 2

3.90m x 2.50m 12'10" x 8'2"



Second Floor

For more information, or to arrange a viewing, please contact

020 7129 1427

sales@martinhomes.co





The Colwood

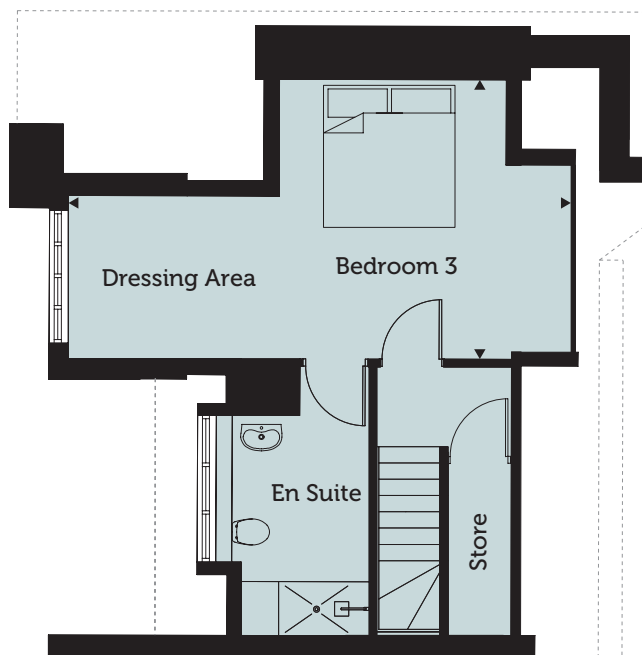
Apartment 8

3 Bedroom, Second & Third Floors

166.5 sq m / 1792 sq ft

Bedroom 3

7.10m x 3.90m 23'4" x 12'10"



Third Floor

For more information, or to
arrange a viewing, please contact

020 7129 1427

sales@martinhomes.co



SLAUGHMAN MANOR

The Tilgate

Apartment 9

2 Bedroom, Second & Third Floors

136 sq m / 1463 sq ft

Living Room

5.40m x 5.30m 17'9" x 17'5"

Kitchen / Dining

5.30m x 3.10m 17'5" x 10'2"

Master Bedroom

3.60m x 3.50m 11'10" x 11'6"

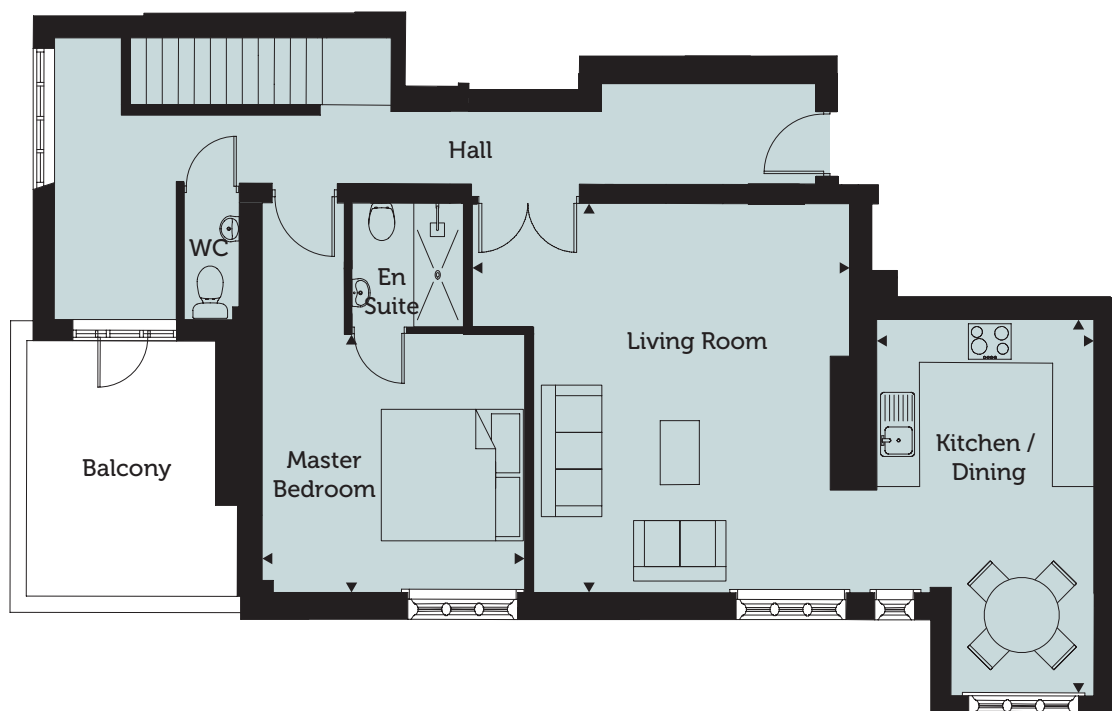


Second Floor

For more information, or to
arrange a viewing, please contact

020 7129 1427

sales@martinhomes.co





The Tilgate

Apartment 9

2 Bedroom, Second & Third Floors

136 sq m / 1463 sq ft

Bedroom 2

5.70m x 3.80m 18'8" x 12'6"

Study

4.20m x 3.00m 13'9" x 9'10"



Third Floor

For more information, or to arrange a viewing, please contact

020 7129 1427

sales@martinhomes.co

