

House | Ground Floor

490 Sq Ft

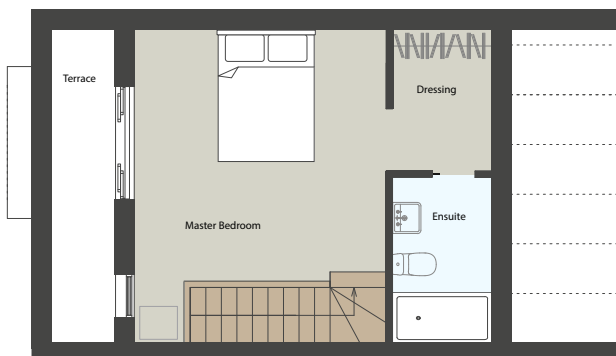
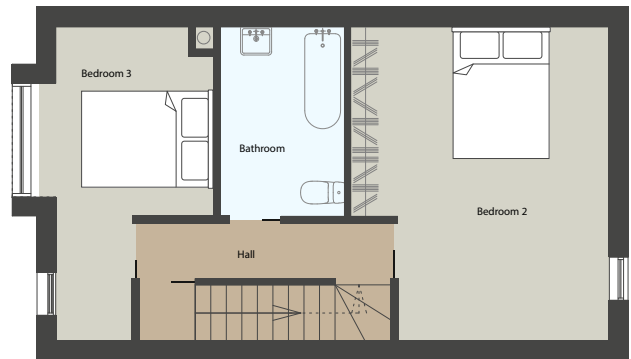
Living & kitchen 5.1m x 9.24m (16'7" x 30'3")

House | First Floor

434 (exc stairs)

Bedroom 2 5.075m x 3.340m (16'6" x 10'9")

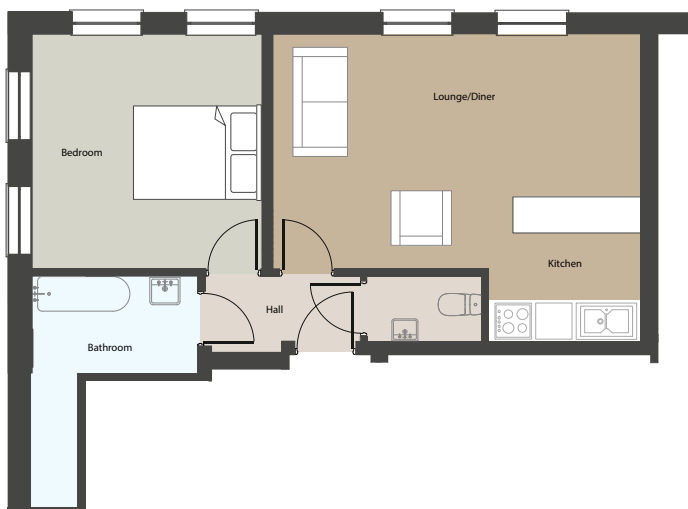
Bedroom 3 4.86m x 2.75m (15'9" x 9'0")



House | Second Floor

300 (exc eaves storage)

Master Bedroom 5.1m x 3.75 m (16'7" x 12'3")

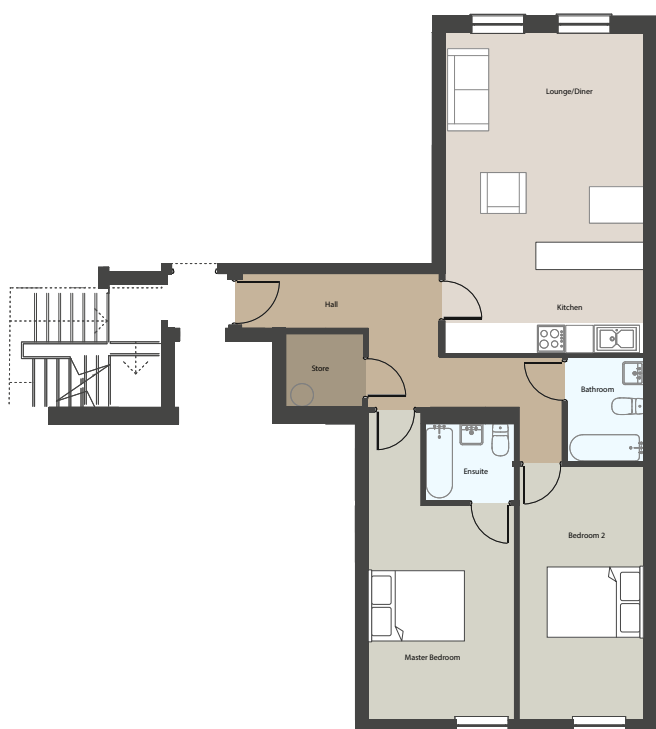


Apartment One

581 sq ft

Living & kitchen 6.17m x 3.9m (20'2" x 12'7")

Bedroom 3.88m x 3.6m (12'7" x 11'8")



Apartment Two

936 sq ft

Living & kitchen 7.1m x 4.3m (23'2" x 14'1")

Master Bedroom 4.7m x 3.2m (15'4" x 10'74")

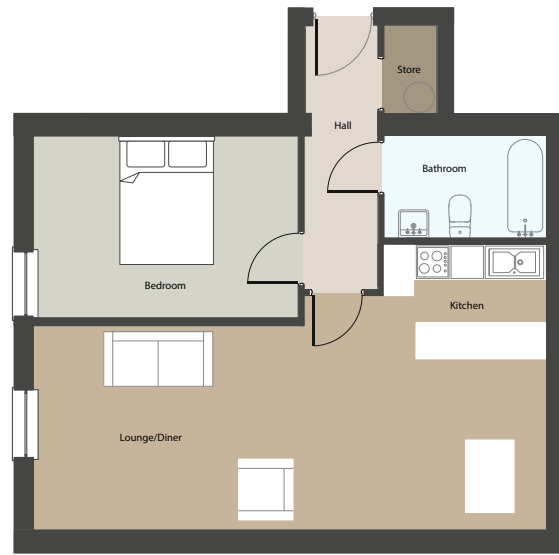
Bedroom 2 5.5m x 2.6m (18'0" x 8'5")

Apartment Three

624 sq ft

Living & kitchen 4.8m x 8.4m (15'7" x 27'5")

Bedroom 4.3m x 3.1m (14'1" x 10'1")



Apartment Four

775 sq ft

Living & kitchen 6.1m x 5.7m (20' x 18'7")

Bedroom 4.1m x 3.1m (13'4" x 10'1")

Bedroom 2 2.9m x 3.4m (9'5" x 11'1")

Apartment Five

1011 sq ft

Living & kitchen 5.6m x 7.8m (18'3" x 25'5")

Master Bedroom 3.8m x 3.2m (12'4" x 10'4")

Bedroom 2 4.6m x 2.6m (15' x 8'5")

